

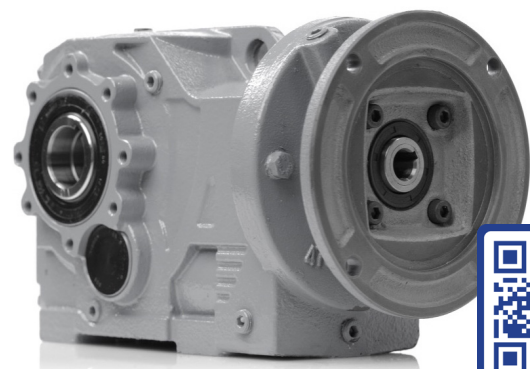
Helical Bevel Speed Reducers

KAN/KHN Series - Integrated Power Lock Models Available

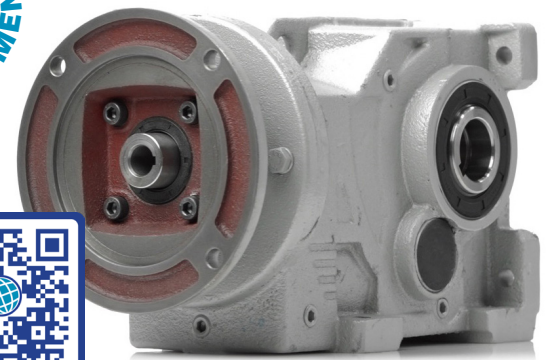
Featuring a C-face motor input flange and hollow bore output. Universal compatibility with NEMA C-face motors simplifies retrofits across many industrial process applications.

The WorldWide Electric KHN and KAN Series Helical / Bevel Speed Reducers deliver a broad range of power and output torque to support a wide array of applications. The standard NEMA quill input design simplifies the task of retrofitting as it is universally compatible with any C-Face motor. The KHN Series gear reducer features a foot-mounted design while the KAN Series reducer is available with a torque arm or flange mounted design.

Power Lock Benefits — The power lock provides a more secure connection, using a non-positive connection between the driven shaft and the hollow shaft in the gear unit. It removes the need for key alignment, reduces seizing and simplifies installation and removal.



KAN Series



KHN Series



Quick Specs & Features

- Housing: FCD45 Cast Iron
- Input Compatibility: NEMA C-face motor input flange
- Hollow Bore Output
- Box Sizes: 37 - 97 | Power Lock 87, 97
- Speed Ratio: 5:1 - 120:1 | Power Lock 7.5:1 - 120:1
- HP Range: ¼ hp to 30 hp
- Two-year Warranty



Responsive
Service & Technical Support



Quality Products
Competitive Pricing



In Stock Availability
Warehouses Nationwide



Fast Shipping
Same-Day Available

Product Features

- All cast iron FCD45 housing for unquestioned strength and reliability
- A.G.M.A. 11 & 12 rated, SCM415 pinion gears - Precision machined for quieter operation and superior strength
- Flanges designed to accept NEMA C-face motors
- Drop-in compatibility with most major European-produced reducer brands
- Available in foot-mounted (KHN), torque arm mounted (KAN), or flange mounted (KAN) styles (Torque arm and B5 flange sold separately)
- Pre-filled with HD320 Mineral Oil for M1 mounting position
- Embedded, double-lipped seals on shafts and hubs keep oil in and contaminants out
- Gears supported by generously sized precision ball and tapered bearings

Power Lock Configuration

Important! Not field convertible from left to right or vice versa. Select the correct configuration when ordering.

- Power Lock Left (PLL): When facing the input, the power lock is on the left, and the customer shaft is on the right.
- Power Lock Right (PLR): When facing the input, the power lock is on the right, and the customer shaft is on the left.
- Power lock bushing is included with PLL or PLR options
- Available on 87 and 97 frame sizes only

Output Options

KAN Series

- Single shaft and double shaft output. KHN shafts are compatible with the KAN Series except when the KAN reducer features a B5 flange.

KAN Series with Power Lock

- B5 output flange (sold separately)
- Integrated output flange

KHN Series

- B5 output flange
- B5 with single shaft output option
- Integrated flange with single shaft and double shaft output options

Output Options and Accessories



Model Number Selection

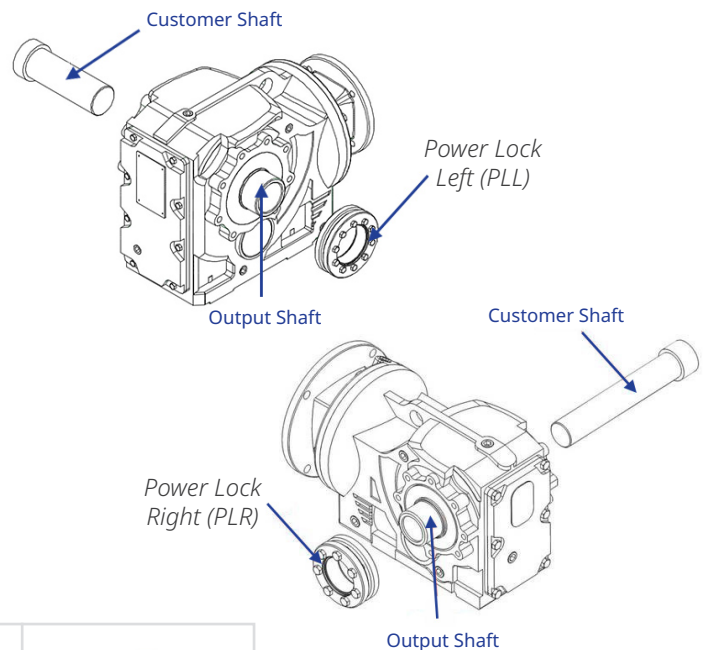
Sample Part Number: KAN87-7.5/1-H-213/5TC-PLL

Each model number contains the product family, box size, nominal ratio, motor frame, and power lock location. When selecting ratio, replace colon with slash, e.g. 10:1 becomes 10/1.

Product Family	Box Size	Nominal Ratio	Motor Frame	Power Lock	
KAN	37	5:1	56C	Left (PLL)	
KHN	47	7.5:1	143TC	Right (PLR)	
	57	10:1	143/5TC		
	67	15:1	145TC		
	77	25:1	182TC		
	87	30:1	182/4TC		
	97	40:1	184TC		
			50:1	213TC	
			60:1	213/5TC	
			70:1	254TC	
			80:1	254/6TC	
			85:1	284/6TC	
			100:1		
		110:1			
		120:1			

† Not all combinations indicated by this table are possible. Please contact us or visit shop.worldwideelectric.com for more information on availability.

Power Lock Orientation



WorldWide Electric Corporation is a leading manufacturer of electric motors, motor controls, gear reducers, and generators. Offering fast, often same-day, shipping from seven regional US warehouses, WorldWide Electric takes pride in providing a competitive edge to our customers by responding to their requirements with urgency, technical expertise, and professionalism.

© Copyright 2023 WorldWide Electric Corporation

GR-KAN/KHN-v03-06-24